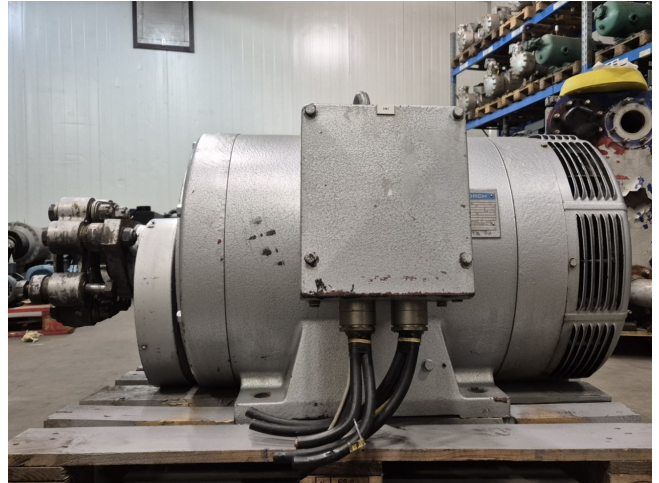


Schorch KN5315M-CB011Z

Specifications

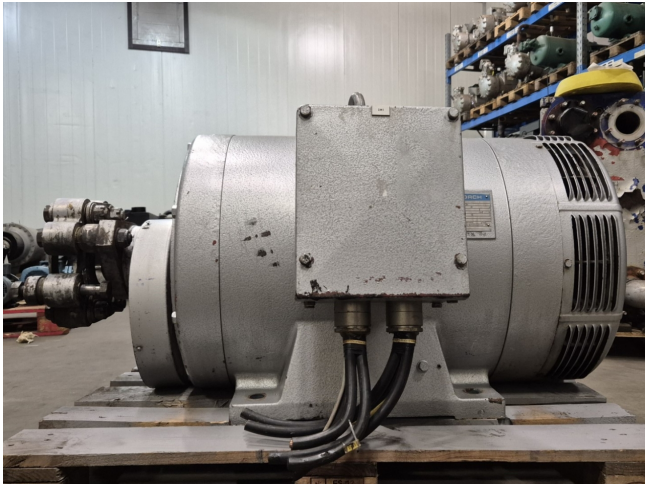
| | |
|---------------|------------------------------|
| Merk | Schorch |
| Type | KN5315M-CB011Z |
| kW | 132 |
| RPM | 985 |
| Size & Weight | 1340x860x760 mm (LxWxH) & |
| 50 Hz / 60 Hz | 50 Hz |
| Stock | 1 |



Description

Used Schorch KN5315M-CB011Z

Gebruikte Schorch KN5315M-CB011 Z elektromotor met de volgende specificaties: 50 Hz - 132 kW - 985 RPM.



| SCHORCH | | | | | |
|--|-----|---------------|------------------|-----------|-------|
| 3~ | Mot | Typ | KN 5315M-CB011 Z | | |
| DIN-Baugr. 315 M | | IP 23 | Nr. 47022201 / 1 | | |
| 380 | | V | 245 A | | |
| 132 | | kW cos φ 0,87 | | | |
| | | 985 | | /min | 50 Hz |
| | | V | | A | |
| Isol.-Kl. 3 | | t | | | |
| Je Lager nach 6000 | | Betriebsst. | | 45 g Fett | |
| Sortenempfehlung siehe Betriebsanweisung | | | | | |
| Fettsorte : | | | | | |
| MADE IN GERMANY | | | | | |



